

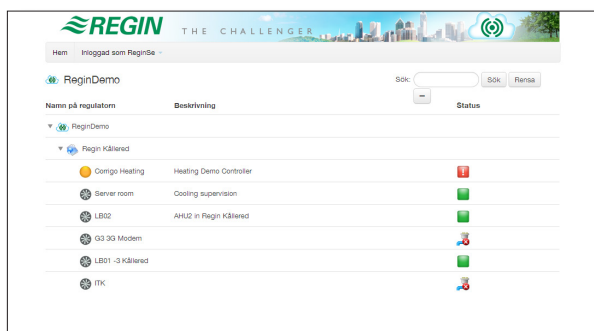


CLOUDigo

The easiest way to complete control of your installations

Via phone, tablet or computer

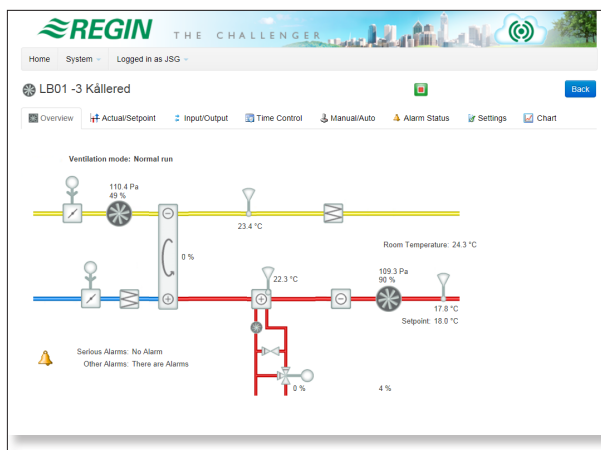
For the user who wants complete control of their building portfolio's indoor climate at all times, CLOUDigo is the tool of choice. Our web-based platform can always be reached both by you and your colleagues regardless of your physical location.



For an easy overview of your buildings

Complete control – anywhere and at any time

Follow your installations in real time with just a few simple clicks. Navigate between the settings and values in connected controllers with an integrated web server. All settings made in CLOUDigo take full effect in the controllers instantly. This makes CLOUDigo the natural choice for individuals working with multiple installations or installations distributed over a wide geographical area.



A dynamic image of the current application

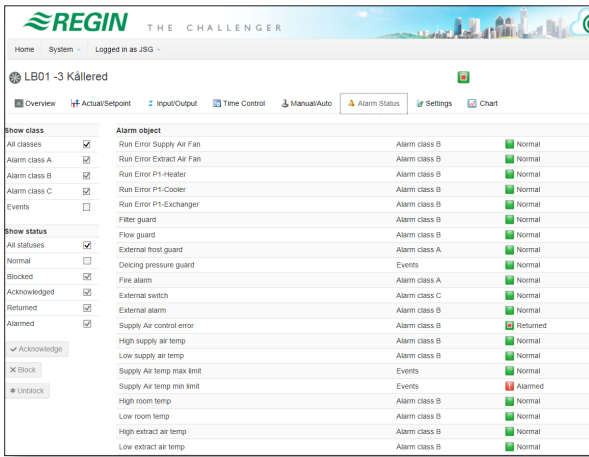
Short facts about CLOUDigo

- Gain control of the indoor climate of your building portfolio – anywhere and at any time.
- The ability to analyse and act instantly. Quick, easy and effective.
- CLOUDigo handles historical data for complete control and overview.
- Work using any screen while still retaining full functionality.
- Getting started is easy. The installation of connected controllers is extremely easy and developed in accordance with our “Ready Steady Go” concept.
- Work using a platform that permits you to grow. You handle your installations – CLOUDigo handles the rest.

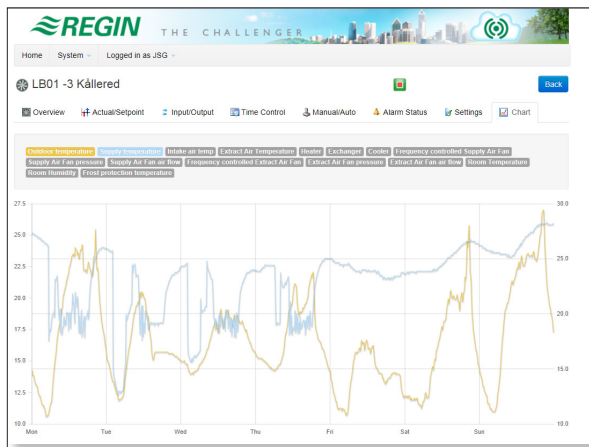
Analyse and act instantly

CLOUDigo is easy to use and provides you with a clear overview of your installations. A dynamic image of the application is automatically generated as soon as the controllers are connected to the service. The current configuration values are all displayed in real time. Settings and setpoints can be changed to immediate effect. Operations previously requiring physical access to a cabinet can now be handled remotely – regardless of your distance from the installation. CLOUDigo also enables you to receive alarms via e-mail and to acknowledge them using your mobile phone, tablet or computer. CLOUDigo is the tool providing comfortable, quick, easy and effective access.





Alarms via e-mail and a clear web-based overview



The controller sends log data to CLOUDigo every ten minutes

Work using historical data to compare your installations over time

Immediately after the controller has connected to the service, CLOUDigo will begin logging values – providing you with the information you need to follow the history of your building installations for a period of up to one year at a time. Switch between different monthly overviews to obtain a general overview – or export your historical data to Excel for deeper analyses. CLOUDigo provides you with the basis to compare data between installations, offering solid evidence that energy saving measures implemented by you are really paying off.



Use any screen

CLOUDigo enables you to work from any screen while still retaining full functionality. Regardless of whether you are working from your phone, tablet or computer, you will still always be able to log on and work using your own settings. The interface adapts automatically, making your work simple. Internet access is the only thing required.

READY STEADY GO

Getting started – just as easy as Ready Steady Go

CLOUDigo is developed with a focus on simplicity, meaning you need no in-depth IT skills to set the system up. All you need to get started is a Corrigo or Exigo with a TCP/IP port, access to an existing network or Regin’s 3G/4G modem. Next, simply follow two easy steps: Log on to cloudigo.regincontrols.com and create your account. Register your Corrigo/Exigo using the serial number printed on the side of the unit. Everything is now set up and ready to go. If you want to connect additional controllers, simply upgrade your account to the number of units desired.

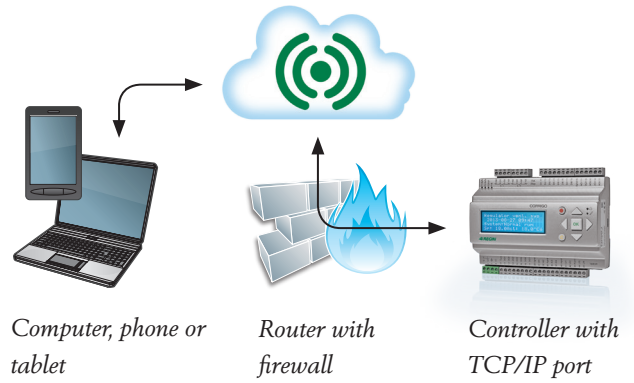
All controllers that should communicate with CLOUDigo must be prepared for this. This is performed quickly and simply using our software configuration tools, available free of charge. The performed configuration will then be entered into CLOUDigo. The first thing you’ll see is an easy to read, dynamic overview image of your installation.

User name	Language	Access level	Created	
ppp	sv-SE	SysAdmin	2014-05-12 10:02:44 UTC	Edit
MED	sv-SE	SysAdmin	2014-05-08 08:37:55 UTC	Edit
Peter K-J	da	Admin	2014-01-21 12:36:49 UTC	Edit
BME	fi	SysAdmin	2013-12-13 13:03:02 UTC	Edit
Kalle	en	Operator	2013-10-16 13:29:37 UTC	Edit
LBS	sv-SE	SysAdmin	2013-05-06 05:54:28 UTC	Edit
RSN	sv-SE	SysAdmin	2013-05-06 05:53:51 UTC	Edit
RLT	sv-SE	SysAdmin	2013-05-06 05:53:32 UTC	Edit
PSR	sv-SE	SysAdmin	2013-05-06 05:51:50 UTC	Edit
MRI	sv-SE	SysAdmin	2013-05-06 05:51:32 UTC	Edit

You decide all access rights

Create added value using the platform

CLOUDigo enables you to grant others platform access, such as your customers or colleagues. Every CLOUDigo account enables you to create any number of additional users with various access rights. Every user receives individual log-on information and sees only his or her own buildings, all while you retain a complete overview of all installations. You decide which areas and controllers should be available to each individual user. You also decide the changes each user should be allowed to make to each connected unit. This generates added value since you will always retain control, while at the same time the building owners can freely access the information they need.



You handle your installations – CLOUDigo handles the rest

CLOUDigo is the tool of choice for when you only want to focus on your installations.

Make use of a single service while avoiding problems with difficult IT-related issues. Always work using the latest version in a dependable platform where everything is handled automatically. You don't need to worry about upgrades or maintenance of servers or clients that risk becoming obsolete after just a few years of operation.

CLOUDigo also contains solutions to earlier IT-related questions, such as problems involving fixed IP addresses and controller network issues. The only thing required by CLOUDigo is for the controller to be connected to the Internet. The controller will then detect CLOUDigo automatically. If you do not happen to have an available Internet connection, Regin offers 3G/4G modems.

Try CLOUDigo out before you buy
 Why not take the chance to test all the advantages offered by CLOUDigo? Creating a new account gives you the opportunity to try CLOUDigo out for a period of time.

Product documentation

Document	Type
CLOUDigo user guide	User guide on how to configure and use CLOUDigo

The document can be downloaded from www.regincontrols.com.

Head office Sweden
 Phone: +46 31 720 02 00
 Web: www.regincontrols.com
 Mail: info@regin.se