



ANS-20

2 pressure outlets and 2 m plastic tube

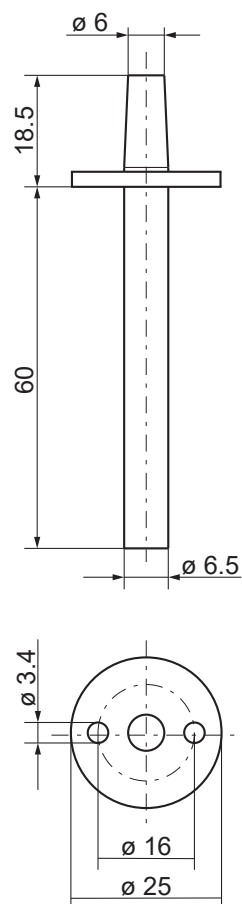
Outlets for measuring pressure in a ventilation duct.

- ✓ Plastic
- ✓ 90° angle at the tip

Function

For optimal measuring results, measuring points with turbulent air flow should be avoided. Preferably, measuring should be performed at a distance of 2 duct diameters before bends and branching and at 6 duct diameters after bends and branching.

Dimensions



Measurements in mm