

SCS-EP

Error panel for Smoke Control System



The SCS-EP error panel is used in the Regin Smoke Control System to easily handle error messages from the system.

- ✓ Show smoke control system errors and error causes with sound and light
- ✓ Possibility to set light and sound directly on the panel
- ✓ Controlled by 24V AC power
- ✓ Protection class, IP40

Application

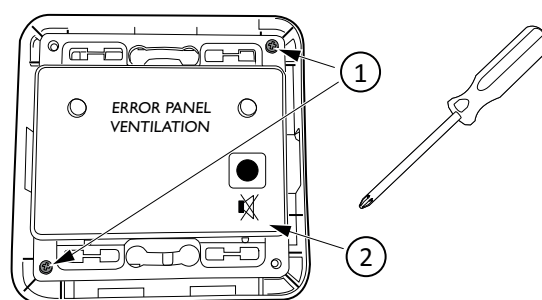
The SCS-EP error panel is connected to the SCS-M2 master unit in the Regin Smoke Control System. When an error occurs in the system the error panel indicates this with a light signal, and if needed also a sound signal.

Function

When an error occurs in the system the error panel indicates this with a light and/or a sound signal. The sound signal can be muted from the error panel, but also from the connected SCS-M2 master unit.

The error panel is powered with 24V AC.

3. Remove the front cover assembly (2).



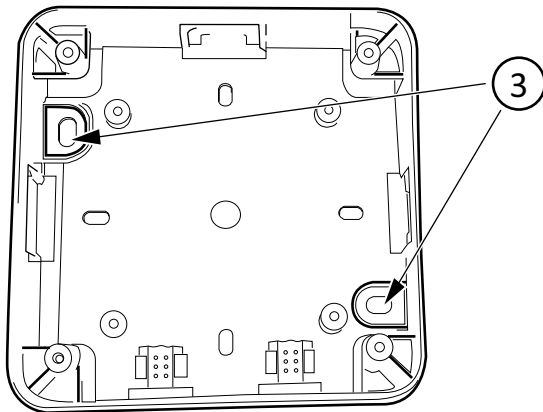
- ① Screw
- ② Front cover assembly

Installation

Mounting

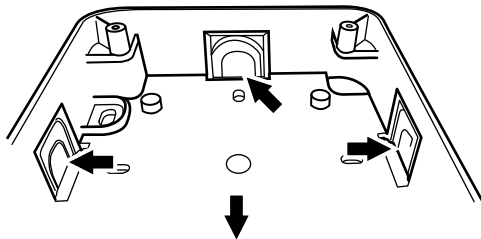
1. Remove the front lid frame.
2. Unscrew the two screws (1).

4. Place the bottom frame on a surface and mount with two screws in the two fastening holes (3).



③ Fastening holes

5. Carve the needed holes for wiring in the casing with a knife, or similar.



6. Connect the wiring and reassemble in the reverse order. See section *Wiring*.

Technical data

Protection class	IP40
Power	24V AC/DC, +/- 15%, powered from SCS-M2
LED light colour	Yellow
Ambient temperature	0...50°C



This product carries the CE-mark. More information is available at www.regincontrols.com.

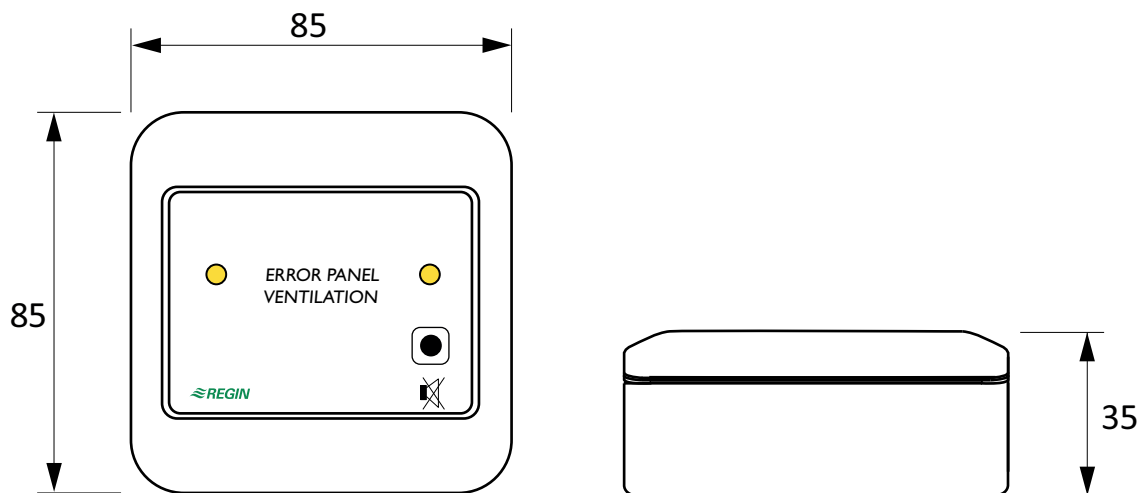
Material

Housing	Polycarbonate, ABS
Colour	White, RAL 9003

Models

Article		
SCS-EP	Error panel	

Dimensions



Width: 85

Height: 85

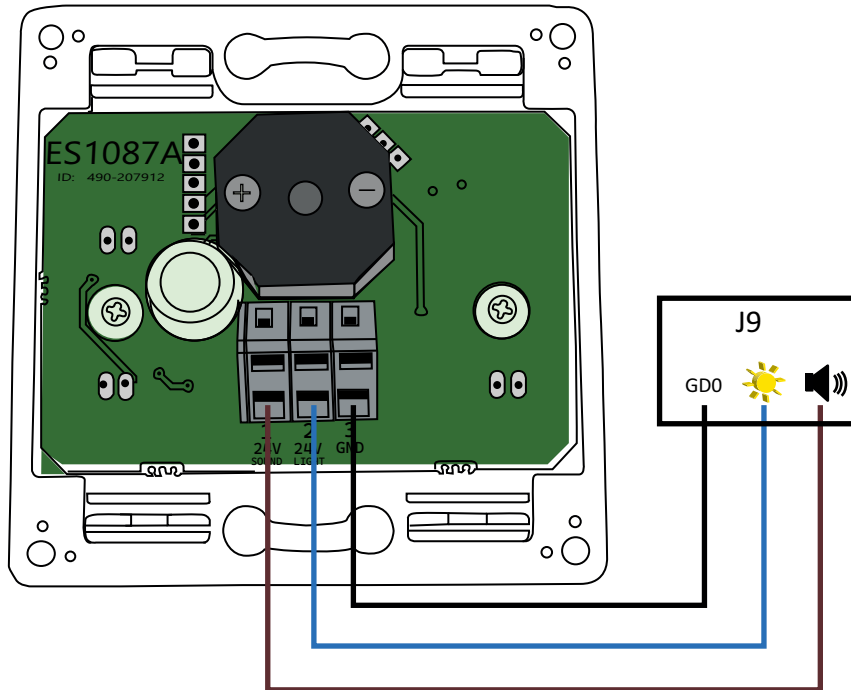
Depth: 35

[mm]

Wiring

From J9:

1. Connect GD0 (black) to connection terminal 3.
2. Connect Light (blue) to connection terminal 2.
3. Connect Sound (brown) to connection terminal 1.



Documentation

All documentation can be downloaded from www.regincontrols.com.