

ED-T70W

7 inch external touch display for controllers with web interface



ED-T70W is a user friendly touch display. With just a few clicks it connects to a controller with a web interface. It is suitable for all indoor environments.

- ✓ Capacitive touch display with high resolution
- ✓ Clear and easy interaction
- ✓ For controllers with web interface
- ✓ Flush mounted or mounted in cabinet door.

Application

The display connects to a controller and gives access to the controller's web interface. The web interface is used to monitor a controller and work with the application by changing setpoints, monitoring alarms etc.

Function

The power to the touch display is supplied either by PoE (power over ethernet), or via an external power supply unit.

When the display is turned on, the start page will be shown. On the start page you can search the network for controllers in the same network. The display will then show a list of the units in the network and you select one by touching the name on the display screen. It is also possible to write the controller's IP address directly for quick connection to the controller.

From the start screen you can reach information about the ethernet connection and ethernet settings where you can turn on or off DHCP .

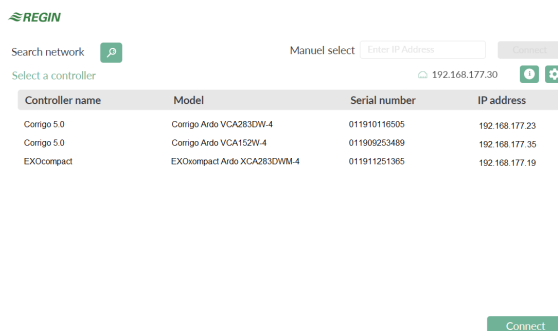


Fig. 1 Example of selection of a controller in the display.

Installation

The display can be mounted directly on a flush box or in a control cabinet door using the mounting frame. It is connected to the controller with a network/ethernet cable.

Technical data

Supply voltage	12...48 V DC or 24 V AC (20...36 V AC, 50...60Hz) or PoE IEEE 802.3af (Power over ethernet)
Power consumption	5 VA
Protection class	IP20
Storage temperature	-20...70 °C
Ambient temperature	0...45 °C
Ambient humidity	5...85 % RH non-condensing
Dimensions, external (WxHxD)	177,1 x 110,1 x 14, 8 mm
Display type	Projected capacitive multi- touch
Touch panel	7" TFT IPS
Resolution	1024 x 600 px
Weight	298 g

Communication data

Ethernet	Standard ethernet connection
-----------------	------------------------------



This product carries the CE-mark. More information is available at www.regincontrols.com.

Accessories

Article	Description
X1111	Power supply unit

Dimensions

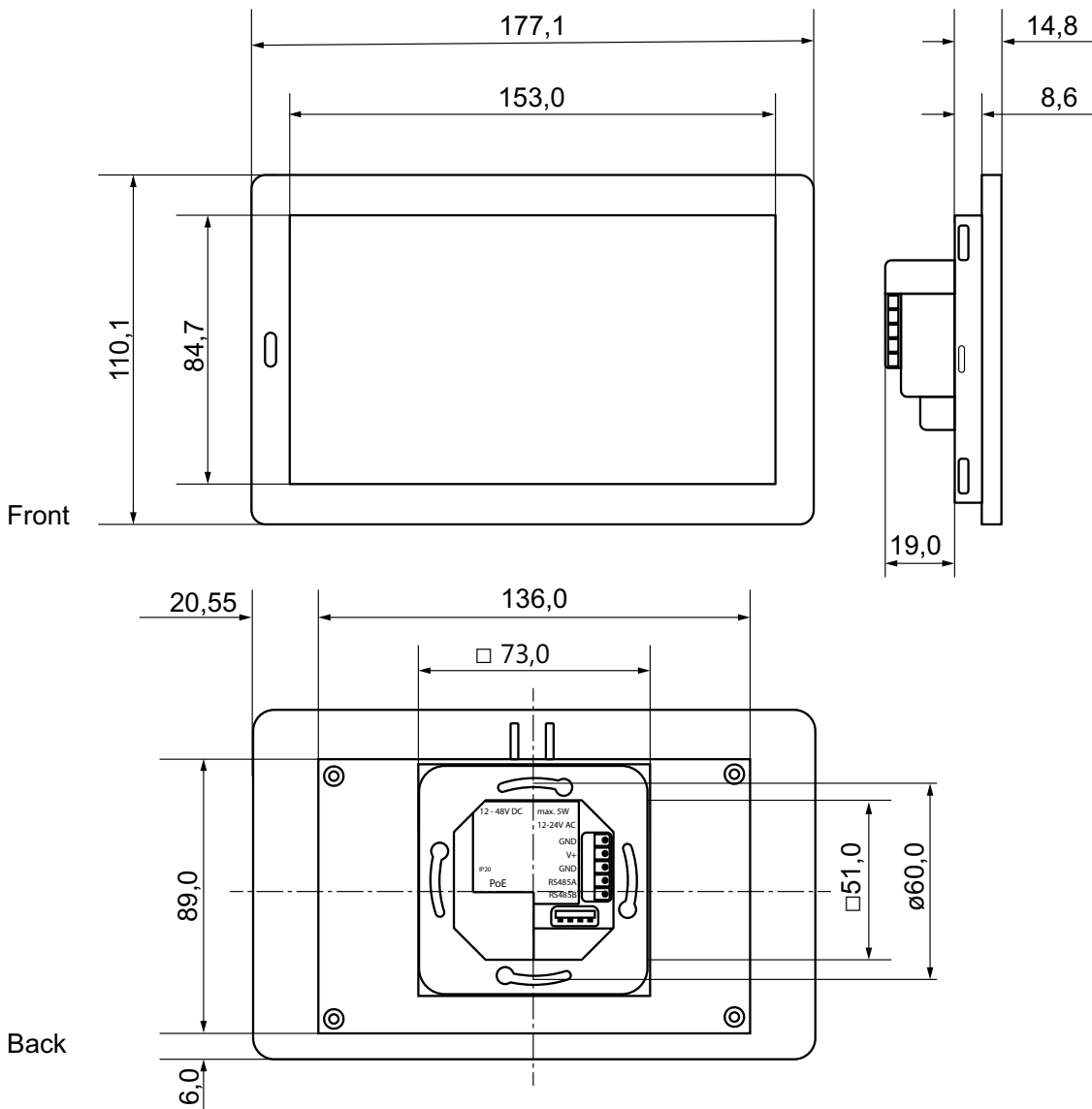


Fig. 2

[mm]

Documentation

All documentation can be downloaded from www.regincontrols.com.