

# ED-T70W-2

7" external touch display for controllers with web interface



ED-T70W-2 is a user friendly touch display. With just a few clicks it connects to a controller with a web interface. The display is suitable for all indoor environments and, in certain temperature conditions, outdoor environments as well.

- ✓ Capacitive touch display with high resolution
- ✓ Clear and easy interaction
- ✓ For controllers with web interface
- ✓ Integrated in cabinet panel or handheld
- ✓ IP65 rated

## Application

The display connects to a controller and gives access to the controller's web interface. The web interface is used to monitor a controller and work with the application by changing setpoints, monitoring alarms etc.

## Function

The power to the touch display is supplied by PoE (Power over Ethernet).

When the display is turned on, the start page is shown. On the start page you can search the network for controllers in the same network. The display then shows a list of the units in the network and you select one by touching the controller's name on the display screen. It is also possible to write the controller's IP address for direct connection to the controller.

From the start screen you can reach information about the Ethernet connection and Ethernet settings, where you can turn DHCP on or off.

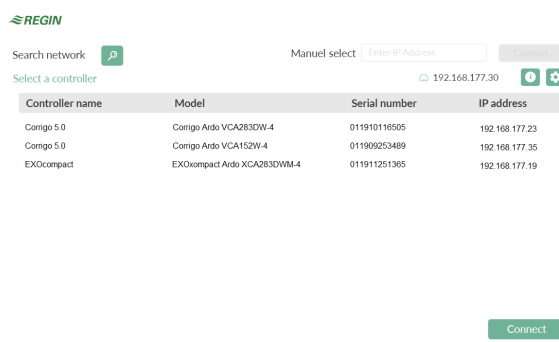


Fig. 1 Example of network search results in the display.

## Installation

The display can be integrated in a control cabinet panel or placed in a supplied pocket for easy handheld use. It is connected to the controller with a standard network/Ethernet cable.

## Technical data

<b>Supply voltage</b>	PoE IEEE 802.3af
<b>Power consumption</b>	5 VA
<b>Protection class</b>	IP65
<b>Storage temperature</b>	-20...+70 °C
<b>Ambient temperature</b>	0...+45 °C
<b>Ambient humidity</b>	5...85 % RH non-condensing
<b>Dimensions (WxHxD)</b>	199 x 131 x 26 mm (display), 205 x 83 x 31 (pocket)
<b>Display type</b>	7" TFT IPS
<b>Touch panel</b>	PCAP multi-touch
<b>Communication ports</b>	1
<b>Port type</b>	Ethernet
<b>Weight</b>	374 g + 55 g (pocket)

## Communication data

<b>Ethernet</b>	Standard Ethernet connection
-----------------	------------------------------

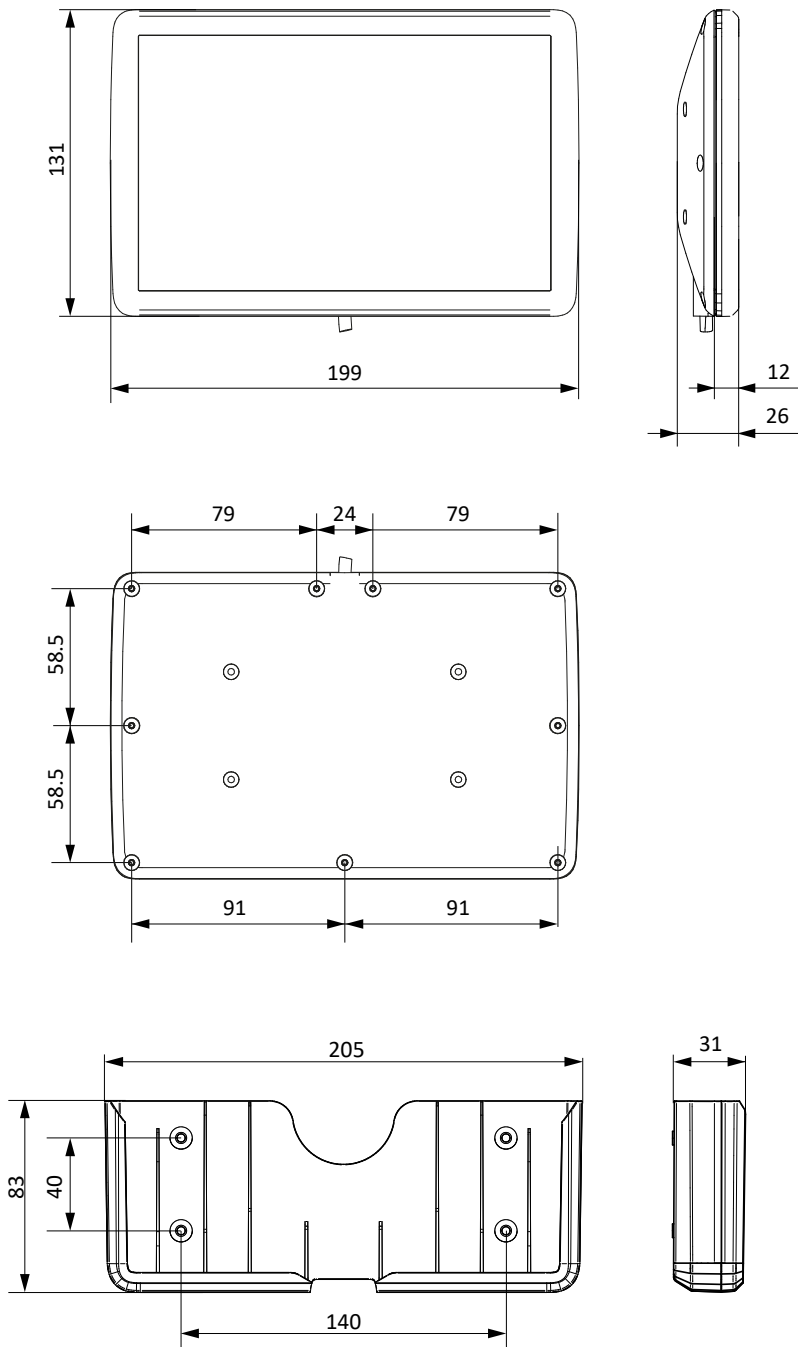


This product carries the CE-mark. More information is available at [www.regincontrols.com](http://www.regincontrols.com).

## Accessories

<b>Article</b>	<b>Description</b>
POE15	POE-injector for use with non-powered networks, or if you are connecting ED-T70W-2 to a standard controller from Regin.

## Dimensions



[mm]

## Documentation

All documentation can be downloaded from [www.regincontrols.com](http://www.regincontrols.com).