



2SAS/2SBS

District heating valve

A series of 2-way valves intended for control of hot/cold water, glycol-mixed water or steam.

- Size DN15...DN100
- Kvs value 0.63...160
- Media temperature -5...+185°C

The valves in the series 2SAS.../2SBS... are intended for hot and cold water, glycol-mixed water or steam within the temperature range -5...+185°C.

The valves are pressure balanced from DN20, type 2SBS, and are therefore able to handle high differential pressures with low actuator force.

Function

The valve closes when the stem is in its lowest position.

Actuators

The valves are intended for use with the actuators:

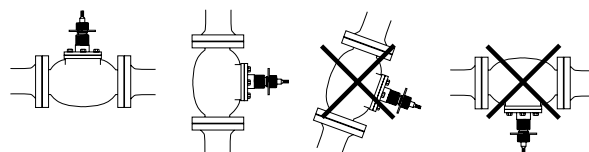
- RVA5
- RVA18

See overleaf for table of recommendations.

- Pressure class PN16
- Differential pressure 1.6 MPa

Installation

The valves should be mounted according to the flow direction marks on the valves.



Material

The valves have body and lid of nodular iron. Cone, seat, stem and lining are in stainless steel.

The valves have a self-adjusting packing box in Teflon and an O-ring in Viton.

Control of refrigerants

The valves can be adapted to be used with different types of refrigerants. A special kind of packing box should be mounted.

Contact Regin for more information.

Models

2-way	Connection	Kvs	Max. diff. pressure
2SAS15-0,63	DN15	0.63	1.6 MPa
2SAS15-1,0	DN15	1.0	1.6 MPa
2SAS15-1,6	DN15	1.6	1.6 MPa
2SAS15-2,7	DN15	2.7	1.6 MPa
2SBS20-3,9	DN20	3.9	1.6 MPa
2SBS20-6,3	DN20	6.3	1.6 MPa
2SBS25-10	DN25	10	1.6 MPa

2-way	Connection	Kvs	Max. diff. pressure
2SBS32-16	DN32	16	1.6 MPa
2SBS40-27	DN40	27	1.6 MPa
2SBS50-39	DN50	39	1.6 MPa
2SBS65-63	DN65	63	1.6 MPa
2SBS80-100	DN80	100	1.6 MPa
2SBS100-160	DN100	160	1.6 MPa

Technical data

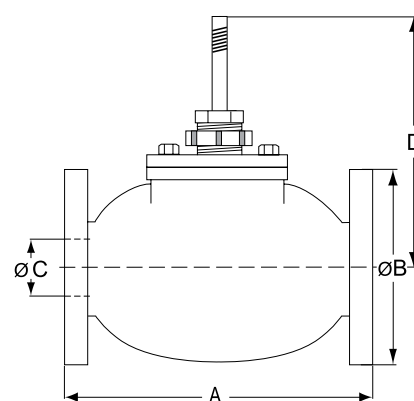
Flow characteristics	Equal percentage
Fluid temperature	-5...+185°C
Media	Hot, cold, glycol-mixed water or steam
Connection	Flanges according to SS 335 table 6
Stroke	20 mm (2SBS100 = 38 mm)
Rangeability	50:1
Pressure class	PN16
Max. leakage	0.05 % of kvs

Material

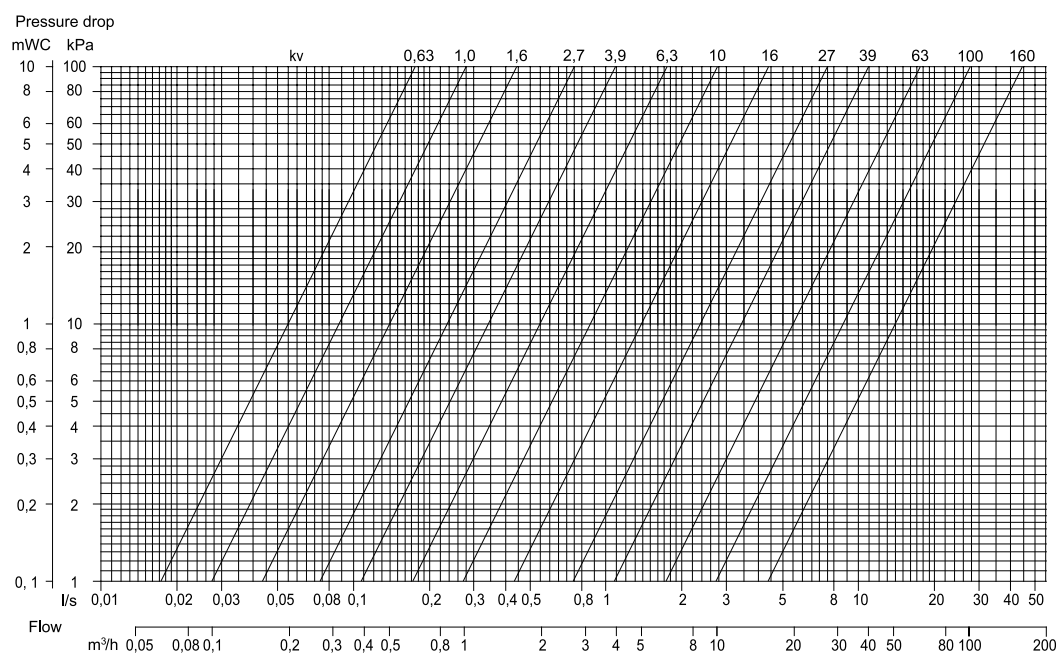
Body	Nodular cast iron Grade 500/7
Seat and lining	Stainless steel 304S15
Stem, cone	Stainless steel 303S31
Packing box	Dezincification resistant brass
	CW 602N, self-adjusting teflon (o-ring viton)
O-rings	Viton

Dimensions, choice of actuator and pressure drop diagram

Model	A	B	C	D	Actuator	Weight
2SAS15-0,63	130	95	15	110	RVA5...	3 kg
2SAS15-1,0	130	95	15	110	RVA5...	3 kg
2SAS15-1,6	130	95	15	110	RVA5...	3 kg
2SAS15-2,7	130	95	15	110	RVA5...	3 kg
2SBS20-3,9	140	105	20	115	RVA5...	3 kg
2SBS20-6,3	140	105	20	115	RVA5...	3 kg
2SBS25-10	150	115	25	130	RVA5...	4 kg
2SBS32-16	160	140	32	140	RVA5...	6 kg
2SBS40-27	180	150	40	150	RVA5...	8 kg
2SBS50-39	200	165	50	175	RVA5...	11 kg
2SBS65-63	240	185	65	180	RVA5...	15 kg
2SBS80-100	260	200	80	190	RVA5...	20 kg
2SBS100-160	300	220	100	230	RVA18...	25 kg



Measurements in mm.



Head Office Sweden

Phone: +46 31 720 02 00

Web: www.regin.se

Mail: info@regin.se

REGIN

THE CHALLENGER IN BUILDING AUTOMATION